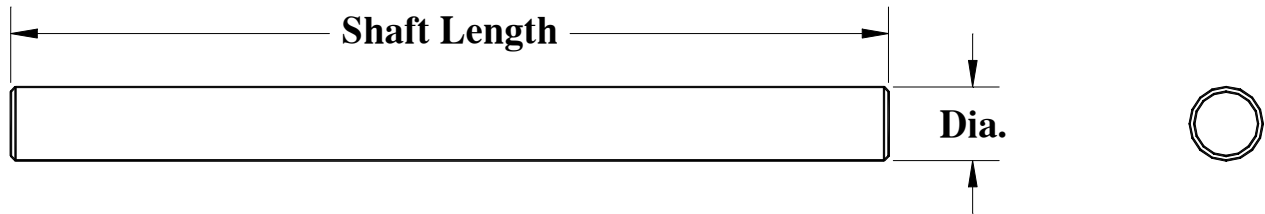


**BNB Industries, Inc.**

PO Box 963, Alvarado Texas 76009-0963 (mailing)  
 2301 Webb Lynn Road, Arlington, Texas 76018 (mfg)  
 Ph: 817-465-9226 E-mail: email@bnb-industries.com  
 Fax 817-465-8305 Web Site: www.bnb-industries.com

**ROLLERS SHAFTS  
 STYLE 1 - PLAIN SHAFT**



SHAFT DIA.	SHAFT MATERIAL	SHAFT PART NUMBER
0.250	304 S.S.	SHAFT1084S * * * *
0.250	MILD STEEL	SHAFT108MS * * * *
0.313	304 S.S.	SHAFT1104S * * * *
0.313	MILD STEEL	SHAFT110MS * * * *
0.438	304 S.S.	SHAFT1144S * * * *
0.438	MILD STEEL	SHAFT114MS * * * *
0.500	304 S.S.	SHAFT1164S * * * *
0.500	MILD STEEL	SHAFT116MS * * * *
0.625	304 S.S.	SHAFT1204S * * * *
0.625	MILD STEEL	SHAFT120MS * * * *
0.750	304 S.S.	SHAFT1244S * * * *
0.750	MILD STEEL	SHAFT124MS * * * *
1.000	304 S.S.	SHAFT1324S * * * *
1.000	MILD STEEL	SHAFT132MS * * * *
1.188	304 S.S.	SHAFT1384S * * * *
1.188	MILD STEEL	SHAFT138MS * * * *
1.250	304 S.S.	SHAFT1404S * * * *
1.250	MILD STEEL	SHAFT140MS * * * *
1.438	304 S.S.	SHAFT1464S * * * *
1.438	MILD STEEL	SHAFT146MS * * * *
Contact BNB for Special Sizes & Material not listed		

* * * * SHAFT LENGTH CODES (USED TO COMPLETE SHAFT PART NUMBER)			
01 = 1/32"	09 = 9/32"	17 = 17/32"	25 = 25/32"
02 = 1/16"	10 = 5/16"	18 = 9/16"	26 = 13/16"
03 = 3/32"	11 = 11/32"	19 = 19/32"	27 = 27/32"
04 = 1/8"	12 = 3/8"	20 = 5/8"	28 = 7/8"
05 = 5/32"	13 = 13/32"	21 = 21/32"	29 = 29/32"
06 = 3/16"	14 = 7/16"	22 = 11/16"	30 = 15/16"
07 = 7/32"	15 = 15/32"	23 = 23/32"	31 = 31/32"
08 = 1/4"	16 = 1/2"	24 = 3/4"	32 = 1"
First two digits of length code is whole inches. Second two digits of length code is based on 32's of an inch increments. Example: Length is 15-1/2" = 1516.			