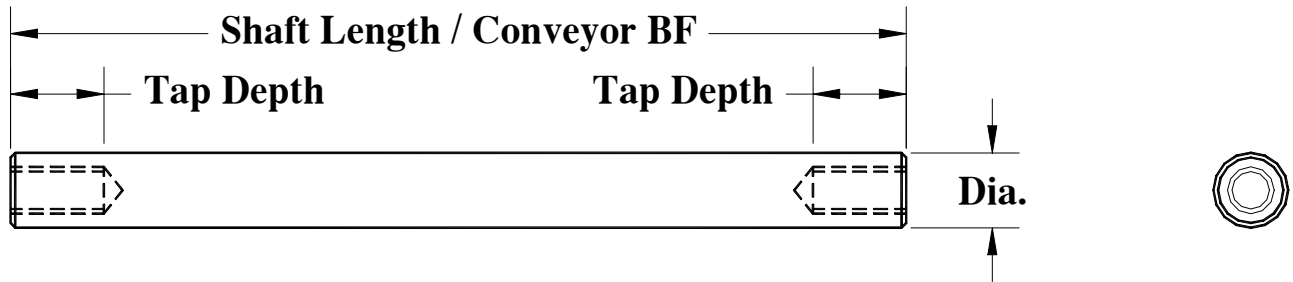


BNB Industries, Inc.

PO Box 963, Alvarado Texas 76009-0963 (mailing)
 2301 Webb Lynn Road, Arlington, Texas 76018 (mfg)
 Ph: 817-465-9226 E-mail: email@bnb-industries.com
 Fax 817-465-8305 Web Site: www.bnb-industries.com

ROLLERS SHAFTS
STYLE 4 - ROUND SHAFT - TAPPED BOTH ENDS



SHAFT DIA.	TAPPED HOLE	SHAFT MATERIAL	SHAFT PART NUMBER
0.500	5/16"-18 5/8" DEEP	304 S.S.	SHAFT4164S * * * *
0.500	5/16"-18 5/8" DEEP	MILD STEEL	SHAFT416MS * * * *
0.625	5/16"-18 5/8" DEEP	304 S.S.	SHAFT4204S * * * *
0.625	5/16"-18 5/8" DEEP	MILD STEEL	SHAFT420MS * * * *
0.750	3/8"-16 3/4" DEEP	304 S.S.	SHAFT4244S * * * *
0.750	3/8"-16 3/4" DEEP	MILD STEEL	SHAFT424MS * * * *
1.000	3/8"-16 3/4" DEEP	304 S.S.	SHAFT4324S * * * *
1.000	3/8"-16 3/4" DEEP	MILD STEEL	SHAFT432MS * * * *
1.188	3/8"-16 3/4" DEEP	304 S.S.	SHAFT4384S * * * *
1.188	3/8"-16 3/4" DEEP	MILD STEEL	SHAFT438MS * * * *
1.250	3/8"-16 3/4" DEEP	304 S.S.	SHAFT4404S * * * *
1.250	3/8"-16 3/4" DEEP	MILD STEEL	SHAFT440MS * * * *
Contact BNB for Special Sizes & Material not listed			

* * * * SHAFT LENGTH CODES (USED TO COMPLETE SHAFT PART NUMBER)			
01 = 1/32"	09 = 9/32"	17 = 17/32"	25 = 25/32"
02 = 1/16"	10 = 5/16"	18 = 9/16"	26 = 13/16"
03 = 3/32"	11 = 11/32"	19 = 19/32"	27 = 27/32"
04 = 1/8"	12 = 3/8"	20 = 5/8"	28 = 7/8"
05 = 5/32"	13 = 13/32"	21 = 21/32"	29 = 29/32"
06 = 3/16"	14 = 7/16"	22 = 11/16"	30 = 15/16"
07 = 7/32"	15 = 15/32"	23 = 23/32"	31 = 31/32"
08 = 1/4"	16 = 1/2"	24 = 3/4"	32 = 1"
First two digits of length code is whole inches. Second two digits of length code is based on 32's of an inch increments. Example: Length is 15-1/2" = 1516.			