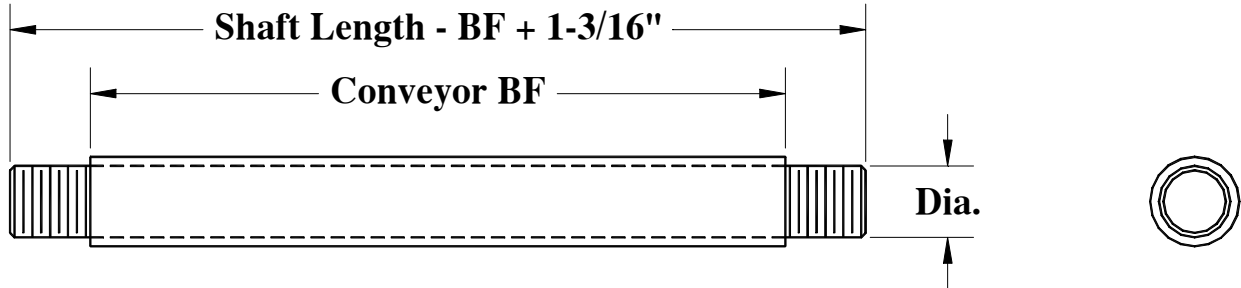


BNB Industries, Inc.

PO Box 963, Alvarado Texas 76009-0963 (mailing)
 2301 Webb Lynn Road, Arlington, Texas 76018 (mfg)
 Ph: 817-465-9226 E-mail: email@bnb-industries.com
 Fax 817-465-8305 Web Site: www.bnb-industries.com

**ROLLERS SHAFTS
 STYLE 6 - THREADED SHAFT WITH SPANNER**



THREAD SIZE & LENGTH	SHAFT MATERIAL	SPANNER SIZE & MATERIAL	SHAFT PART NUMBER
1/4"-20	304 S.S.	0.375" OD - 304 S.S.	SHAFT6084S * * * *
1/4"-20	MILD STEEL	0.375" OD - 304 S.S.	SHAFT608MS * * * *
1/4"-20	ZINC PLATED	0.375" OD - 304 S.S.	SHAFT608MS * * * *
5/16"-18	304 S.S.	0.540" OD - 304 S.S.	SHAFT6104S * * * *
5/16"-18	MILD STEEL	0.540" OD - 304 S.S.	SHAFT610MS * * * *
5/16"-18	ZINC PLATED	0.540" OD - 304 S.S.	SHAFT610MS * * * *
3/8"-16	304 S.S.	0.500" OD - 304 S.S.	SHAFT6124S * * * *
3/8"-16	MILD STEEL	0.500" OD - 304 S.S.	SHAFT612MS * * * *
3/8"-16	ZINC PLATED	0.500" OD - 304 S.S.	SHAFT612MS * * * *
7/16"-14	304 S.S.	0.625" OD - 304 S.S.	SHAFT6144S * * * *
7/16"-14	MILD STEEL	0.625" OD - 304 S.S.	SHAFT614MS * * * *
7/16"-14	ZINC PLATED	0.625" OD - 304 S.S.	SHAFT614MS * * * *
1/2"-13	304 S.S.	0.625" OD - 304 S.S.	SHAFT6164S * * * *
1/2"-13	MILD STEEL	0.625" OD - 304 S.S.	SHAFT616MS * * * *
1/2"-13	ZINC PLATED	0.625" OD - 304 S.S.	SHAFT616MS * * * *
5/8"-11	304 S.S.	0.750" OD - 304 S.S.	SHAFT6204S * * * *
5/8"-11	MILD STEEL	0.750" OD - 304 S.S.	SHAFT620MS * * * *
5/8"-11	ZINC PLATED	0.750" OD - 304 S.S.	SHAFT620MS * * * *
Contact BNB for Special Sizes & Material not listed			

* * * * SHAFT LENGTH CODES (USED TO COMPLETE SHAFT PART NUMBER)		
01 = 1/32"	12 = 3/8"	23 = 23/32"
02 = 1/16"	13 = 13/32"	24 = 3/4"
03 = 3/32"	14 = 7/16"	25 = 25/32"
04 = 1/8"	15 = 15/32"	26 = 13/16"
05 = 5/32"	16 = 1/2"	27 = 27/32"
06 = 3/16"	17 = 17/32"	28 = 7/8"
07 = 7/32"	18 = 9/16"	29 = 29/32"
08 = 1/4"	19 = 19/32"	30 = 15/16"
09 = 9/32"	20 = 5/8"	31 = 31/32"
10 = 5/16"	21 = 21/32"	32 = 1"
11 = 11/32"	22 = 11/16"	
First two digits of length code is whole inches. Second two digits of length code is based on 32's of an inch increments. Example: Length is 15-1/2" = 1516.		