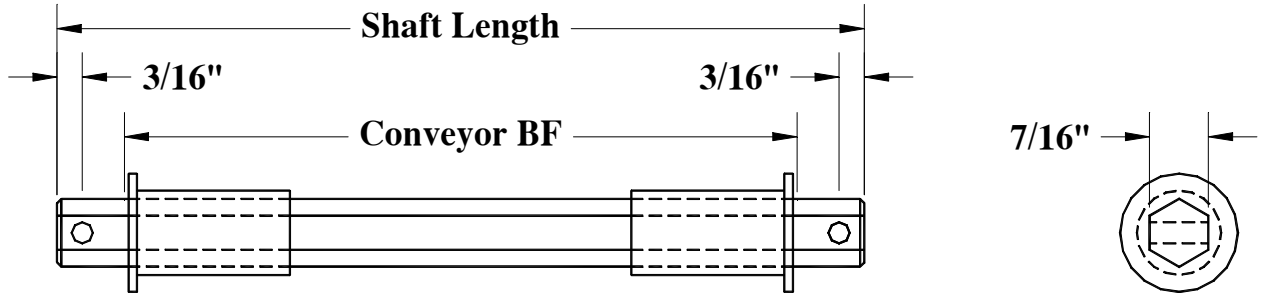


BNB Industries, Inc.

PO Box 963, Alvarado Texas 76009-0963 (mailing)
 2301 Webb Lynn Road, Arlington, Texas 76018 (mfg)
 Ph: 817-465-9226 E-mail: email@bnb-industries.com
 Fax 817-465-8305 Web Site: www.bnb-industries.com

**ROLLERS SHAFTS
 STYLE 7 - HEX SHAFT WITH HEX ADAPTERS**



HEX SHAFT	SHAFT MATERIAL	ADAPTER MATERIAL (SEE CHART)	SHAFT PART NUMBER
5/16"	304 S.S.	SS, MS, PL	SHAFT7104S_ _ * * * *
5/16"	MILD STEEL	SS, MS, PL	SHAFT710MS_ _ * * * *
5/16"	ZINC PLATED	SS, MS, PL	SHAFT710MS_ _ * * * *
3/8"	304 S.S.	PL	SHAFT7124S_ _ * * * *
3/8"	MILD STEEL	PL	SHAFT712MS_ _ * * * *
3/8"	ZINC PLATED	PL	SHAFT712MS_ _ * * * *
7/16"	304 S.S.	SS, MS, PL	SHAFT7144S_ _ * * * *
7/16"	MILD STEEL	SS, MS, PL	SHAFT714MS_ _ * * * *
7/16"	ZINC PLATED	SS, MS, PL	SHAFT714MS_ _ * * * *
5/8"	304 S.S.	PL	SHAFT7204S_ _ * * * *
5/8"	MILD STEEL	PL	SHAFT720MS_ _ * * * *
5/8"	ZINC PLATED	PL	SHAFT720MS_ _ * * * *
11/16"	304 S.S.	SS, MS	SHAFT7224S_ _ * * * *
11/16"	MILD STEEL	SS, MS	SHAFT722MS_ _ * * * *
11/16"	ZINC PLATED	SS, MS	SHAFT722MS_ _ * * * *

Contact BNB for Special Sizes & Material not listed

* * * * SHAFT LENGTH CODES (USED TO COMPLETE SHAFT PART NUMBER)		
01 = 1/32"	12 = 3/8"	23 = 23/32"
02 = 1/16"	13 = 13/32"	24 = 3/4"
03 = 3/32"	14 = 7/16"	25 = 25/32"
04 = 1/8"	15 = 15/32"	26 = 13/16"
05 = 5/32"	16 = 1/2"	27 = 27/32"
06 = 3/16"	17 = 17/32"	28 = 7/8"
07 = 7/32"	18 = 9/16"	29 = 29/32"
08 = 1/4"	19 = 19/32"	30 = 15/16"
09 = 9/32"	20 = 5/8"	31 = 31/32"
10 = 5/16"	21 = 21/32"	32 = 1"
11 = 11/32"	22 = 11/16"	

First two digits of length code is whole inches.
 Second two digits of length code is based on 32's of an inch increments.
 Example: Length is 15-1/2" = 1516.

HEX ADAPTERS	
MATERIAL CODE	MATERIAL
SS	STAINLESS STEEL
MS	MILD STEEL
PL	MOLDED PLASTIC